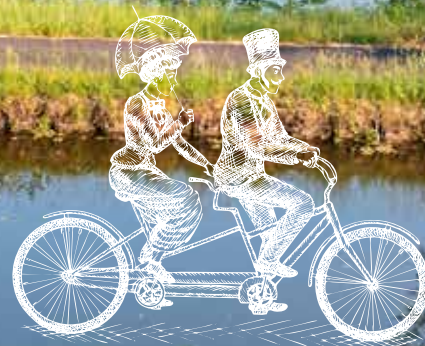




LA VOIE BLEUE, THE CYCLING ROUTE FROM LUXEMBOURG TO LYON



SOMMAIRE

03 > KEY FIGURES OF LA VOIE BLEUE®

04 > PRESS RELEASE

05 > THE MOSELLE VALLEY / 182 KM

- 06 > From the gates of Luxembourg, Sierck-Les-Bains to Metz / 65 km
- 07 > From Metz to Nancy / 67 km
- 08 > From Nancy to Charmes / 50 km

09 > ON THE TOWPATHS OF THE CANAL DES VOSGES / 94 KM

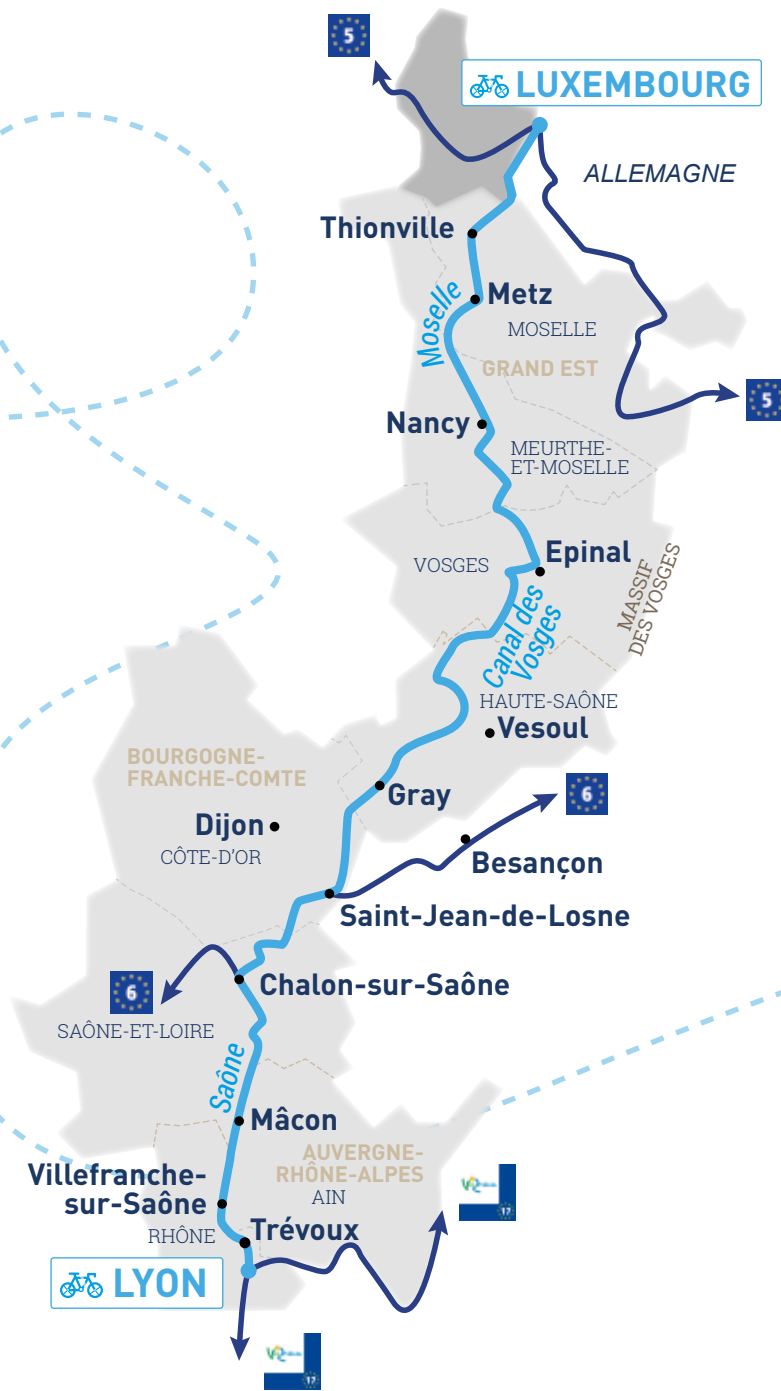
- 10 > From Charmes to Épinal / 27 km
- 11 > From Épinal to Corre / 67 km

12 > ON THE SAÔNE BANKS / 328 KM

- 13 > From Corre to Ray-sur-Saône / 71 km
- 14 > From Ray-sur-Saône to Saint-Jean-de-Losne / 115 km
- 15 > From Saint-Jean-de-Losne to Chalon-sur-Saône / 72 km
- 16 > From Chalon-sur-Saône to Mâcon / 70 km

17 > TOWARDS THE RHÔNE AND LYON THE SAÔNE VALLEY AND THE BEAUJOLAIS / 80 KM

- 18 > From Mâcon to Lyon / 80 km



Key Figures

700 KM
ITINERARY OVER THE WATER

23
STEPS

25
must-see
SITES

4
VINEYARDS
AOC Moselle,
AOC Côtes de Joux,
AOC Côte Chalonnaise,
Maconnais & Beaujolais

15
CHARMING
VILLAGES

3
L'UNESCO
inscribed sites
Lyon, Beaujolais géoparc et Nancy

Interconnected with L'EUROVELO 6 - Véloroute des Fleuves,
L'EUROVELO 17 - Via Rhôna et L'EUROVELO 5 - Via Romea Francigena

29
PARTNERS
INCLUDING

3 RÉGIONS
Grand Est,
Bourgogne-Franche-Comté,
Auvergne-Rhône-Alpes

7 DEPARTEMENTS
MOSELLE,
MEURTHE-ET-MOSELLE,
VOSGES, HAUTE-SAÔNE,
CÔTE D'OR,
SAÔNE-ET-LOIRE ET AIN

1 CITY
LYON MÉTROPOLE

LA VOIE BLEUE® Moselle - Saône by bike

FROM LUXEMBOURG TO LYON:

Almost **700 km** to cycle and go with the flow !

Sunday cyclists, two-wheel enthusiasts, fans of beautiful epics or simply in quest of a break on your bike: focus on **La Voie Bleue®**, for a change of gear! From the Luxembourg border to Lyon, **La Voie Bleue®** is a long distance cycling route of nearly 700 km winding along the water: a route where your eyes will dive into the blue, along the **Moselle** on the **Saône** banks, following the towpaths of the **Canal des Vosges**.

This new long distance cycling route, the first in the East of France, launched in June 2020, invites you to change direction, outlook, pace or just simply perspective. Supported by **29** partners including **three regions, seven departments and a city**, this route is designed for families, handlebar newbies as well as bike addicts.



From north to south, **La Voie Bleue®** is also punctuated by simple pleasures. Start your journey at Sierck-les-Bains, at the border of Luxembourg and descend the Moselle Valley, crossing the **Lorraine** region via Metz and Nancy; then spin towards the **Vosges** and cycle along the **Canal des Vosges** and visit Épinal. Explore **Burgundy** along the **Saône banks**, there you will discover the landscapes of the **Mâconnais** with its vineyards and then wave in the heart of the crus of Beaujolais, before reaching **Lyon and the Rhône**: La Voie Bleue® opens up new horizons. This new long distance cycling route, rich in vibrant sights where you can **go back to your favourites, create memories** and **feast on gourmet delicacies**, draws a colourful epic where cycling finds its ideal scenery.

Coups de Coeur, accommodations on the waterfront and along the riverbanks, barges and cabins on stilts, views to embrace with your eyes, picturesque villages, industrial wastelands and heritage sites, small vineyards or grands crus: from turquoise to azure through mineral blue or cobalt: **La Voie Bleue®** lacks neither pigments nor spice!

Focus on 43 ideas, 43 shades of blue and a deep plunge in a green setting to wind along the Moselle, the Canal des Vosges and the Saône!

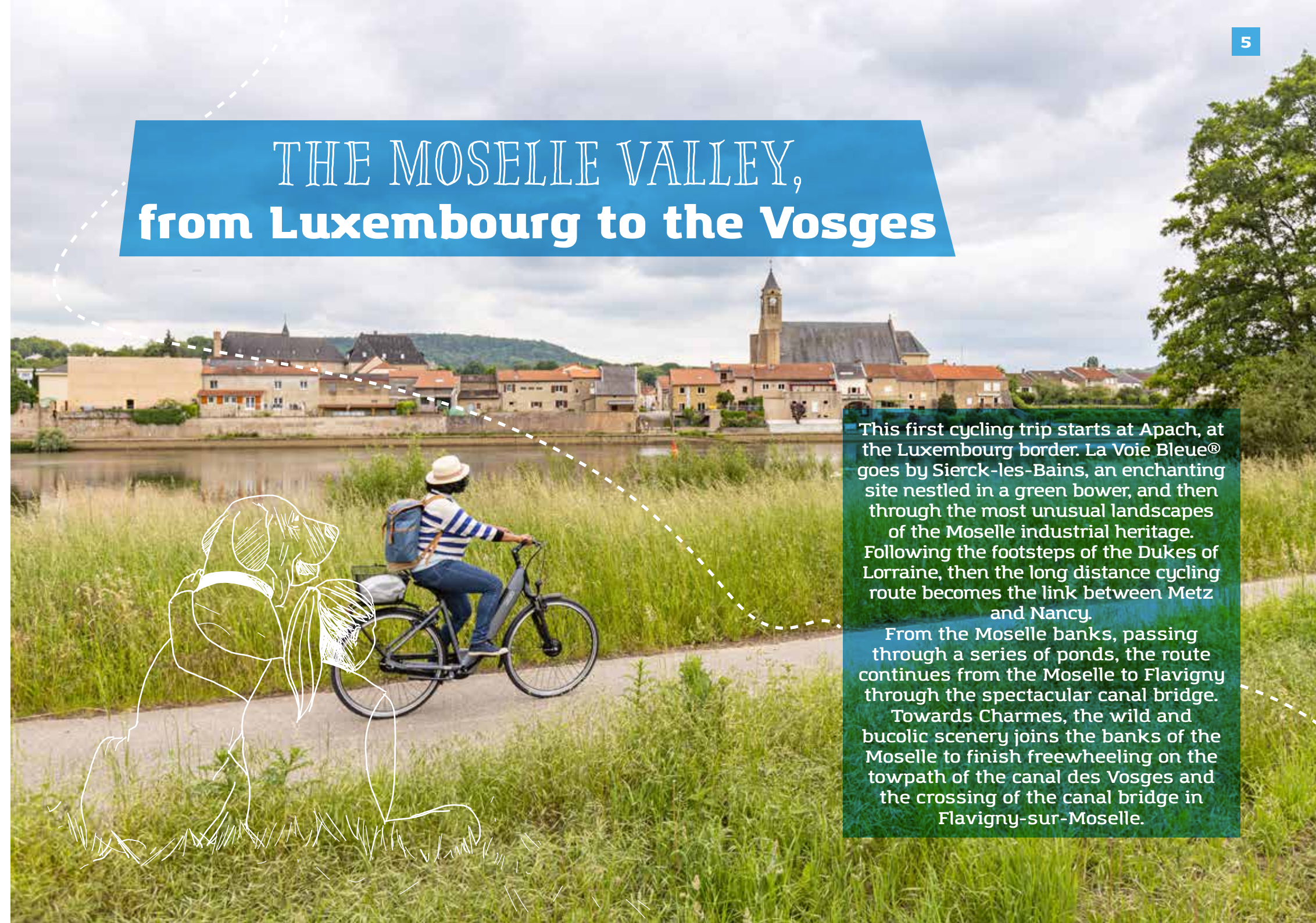


THE MOSELLE VALLEY, from Luxembourg to the Vosges

This first cycling trip starts at Apach, at the Luxembourg border. **La Voie Bleue®** goes by Sierck-les-Bains, an enchanting site nestled in a green bower, and then through the most unusual landscapes of the Moselle industrial heritage. Following the footsteps of the Dukes of Lorraine, then the long distance cycling route becomes the link between Metz and Nancy.

From the Moselle banks, passing through a series of ponds, the route continues from the Moselle to Flavigny through the spectacular canal bridge.

Towards Charmes, the wild and bucolic scenery joins the banks of the Moselle to finish freewheeling on the towpath of the canal des Vosges and the crossing of the canal bridge in Flavigny-sur-Moselle.



FROM THE GATES OF LUXEMBOURG, SIERCK-LES-BAINS TO METZ Three borders region

 **65 km** 



From the sunny slopes of the AOC (protected designation of origin, here referred to wine) Moselle to the castle of Sierck-les-Bains, through the U4 blast furnace in Uckange or the ponds of Saint-Rémy towards the Maxe, La Voie Bleue® alternates vineyards, forests, industrial and historical heritage, where the Moselle is the common thread.

DIVING IN FRENCH CLASSICS THE U4 IN UCKANGE, A RARE RELIC OF THE FRENCH IRON AND STEEL ERA



A strong symbol of the industrial heritage of the Fensch valley, the U4 blast furnace is the last of the six blast furnaces of the factory in Uckange, built in 1890. Today the stage of a cultural and heritage program, this **iron monster** covers an industrial wasteland area of 12 hectares, where the highest points are the chimney (82 m) and the «cradle» of the blast furnace (71 m)!



Being blown away A HIKE ON THE STROMBERG HILL IN SIERCK-LES-BAINS

As the hike on the Stromberg hill promises a full immersion in a forested landscape, vineyards, limestone lawns and hilltop villages, it will allow you for good to overlook Contz-les-Bains and the Sierck region. The highlight: the summit where you will be able to enjoy panoramic views of the meanders of the Moselle winding along the valleys of the Sierck region.



CREATING MEMORIES Rodemack, the «little Carcassonne of the Lorraine region»

Classified among les Plus Beaux Villages de France (the Most Beautiful Villages of France), Rodemack invites you to dive into a characteristic medieval atmosphere. Surrounded by 15th century ramparts covering 700 m, the town has well preserved its medieval past with the fortified gate of Sierck, the «Petit Château» or the «Maison des Baillis».



GOURMET DELICACIES THE MOSELLE WINES, 65 HECTARES OF VINEYARDS ALONG THE RIVER

Along the whole itinerary of La Voie Bleue®, the AOC Moselle sculpts the landscape with vineyards hurtling down from the hillsides, aligned with a line facing the riverbanks. The main grape varieties are Auxerrois, Pinot Noir and Gris and more than half of the vineyard is cultivated according to the organic farming criteria! Several estates, Contz-les-Bains, Haute-Kontz, Petite-Hettange, Ancy-Dornot, Marieulles or Vaux offer wine tasting of great whites and original reds.

THE MOSELLE FROM METZ TO NANCY

 **67 km** 



A must venue, Metz invites you to discover, with its squares and alleys, an atypical architecture playing with the time slider. As La Voie Bleue® plays the role of a real link between the Centre Pompidou-Metz and Place Stanislas in Nancy, it alternates its cycling paths between the Moselle and a range of ponds, before joining Pont à-Mousson and then Nancy among vineyards, ponds and E.N.S. (fragile natural areas).

DIVING IN FRENCH CLASSICS METZ AND THE CENTRE POMPIDOU-METZ, FOR A UNIQUE ARTISTIC EXPERIENCE



The historical centre of Metz, a mosaic of different styles, is a must venue with its imperial quarter, its narrow streets, the cathedral district and Place de la Comédie. On the railway side, the ultra-modern architecture of the Centre Pompidou-Metz, an art and cultural centre, is the work signed by the architect Shigeru Ban and his partner Jean de Gastines. A nod to the Parisian Centre Pompidou, to which it is the sister institution, the Centre Pompidou-Metz is an unmissable place to rediscover contemporary art.



Coup de Coeur of La Voie Bleue A BREAK IN THE ARMS OF THE MOSELLE

Time for an «Apéro Boat» or a dinner on the waterfront, the GD Vacances is an electro-solar boat that sails silently on the Moselle, going back up the river or embracing one of its wild arms. Ideal for touring the historical centre of Metz, the outing offers an original way to have a drink in a friendly atmosphere or to have dinner in a pleasant summer evening.



CREATING MEMORIES Ancy-Dornot, a village in the heart Regional Natural Park of the Lorraine region

Surrounded by sunny slopes nurturing fresh and light white wines, Ancy-Dornot is one of the typical villages around Metz, 15 km. Ancy-Dornot fortified its Romanesque 12th century church to protect its population and was coveted by the Dukes of Lorraine and Luxembourg, in spite of lacking a fortified castle, such as many other villages in the Metz region.

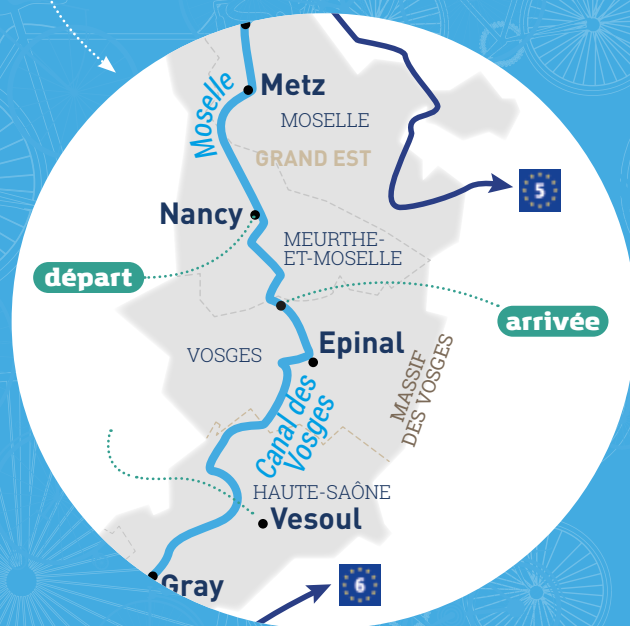


ACCOMODATION LA PÉNICHE ALCLAIR, A GUEST BARGE BOAT ON THE CANAL DE JOUY

A 15-minute walk from Metz city centre, La péniche Alclair is a Freycinet-type barge, built in 1945, used to transport cereals until 2000. The barge was named after the first names of its first owners, Alphonse and Claire, but it was Rodolphe who transformed it into this unusual accommodation with two comfortable guest rooms, a separate entrance and a terrace area.

THE MOSELLE FROM NANCY TO CHARMES

50 km 



After crossing Nancy, La Voie Bleue® goes on along the Meurthe to reach another river, the Moselle, via the junction canal and the Iron History Museum at Jarville-la-Malgrange. Head for the Vosges! The utterly rural towpath of the Canal des Vosges, in the heart of the Moselle Valley, leads to the aptly named Charmes and invites you to cycle with the wind laying with your hair.

DIVING IN FRENCH CLASSICS PLACE STANISLAS, THE ARCHITECTURAL GEM OF NANCY



The bustling Place Stan^{is} is included on the Unesco World Heritage list of the 10 most beautiful squares in the world. The square, built in homage to Louis XV, at the request of Stanislas Leszczynski, Duke of Lorraine, houses the town hall, the Opera House and the Museum of Fine Arts in a real theatre setting, combining neoclassical and baroque style. A mix of elegance and madness, it shows countless wrought iron gates enhanced with gold, designed by Jean Lamour.

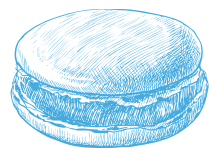


CREATING MEMORIES

Ubexy, the origins of the production of hosts

Once you leave Nancy, you will find many pretty and small villages along La Voie Bleue. Among them, in the heart of the Vosges countryside, Ubexy is a typical example. The convent, founded in 1841 in an old medieval castle, became the domicile of Trappistine sisters, who made white and brown hosts, of which they were the leading producers in France!

GOURMET DELICACIES THE VERITABLE MACARON OF NANCY, AN INSTITUTION SINCE 1793!



Within a stone's throw from Place Stanislas, the Maison des Soeurs Macarons is the only confectionery keeping of the secret and coveted recipe of the authentic macaroons of Nancy. An old Florentine recipe inspired this specialty, which was the legacy of two nuns from the community of sisters of the Benedictine Ladies. As Marguerite Gaillot and Marie-Elisabeth Morlot were forced out of their convent during the French Revolution, they opened a shop to sell their delicacy. It was an instant success!



Coup de Coeur of La Voie Bleue THE CANAL BRIDGE OF FLAVIGNY-SUR-MOSELLE

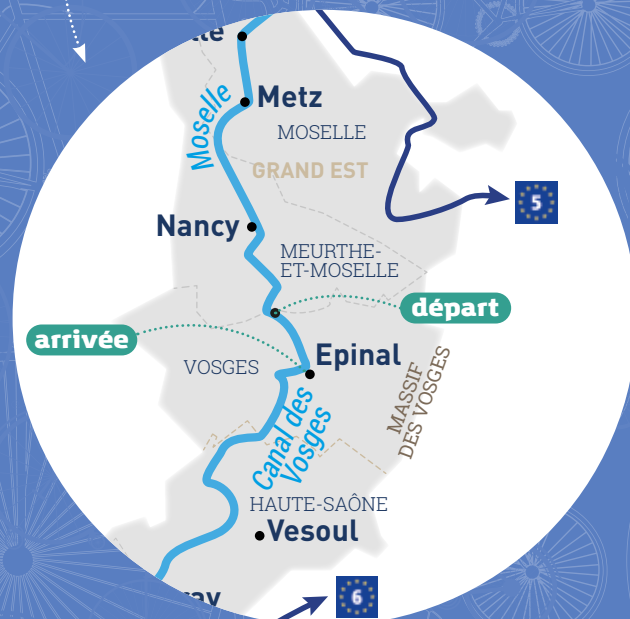
The history of the Canal Bridge began in 1879, when Charles de Freycinet, engineer of the École des Mines and Minister of Public Works, presented a plan for the development of the French heavy industry. His idea was to improve transport of raw materials to processing sites by developing the railway and waterway system. A year later, the Canal Bridge was accomplished with no less than ten arches over a span of 160 meters. A true work of art, it allows boats that take the Canal des Vosges to cross the Moselle as well as the feeding conduct of motive waters in complete safety.

ON THE TOWPATHS of the Canal des Vosges

This segment of the Voie Bleue® route, completely flat and landscaped, goes through the Vosges from north to south. From Charmes to Corre, the mainly rural landscapes alternate with remarkable villages and the remains of a rich textile industrial heritage. The souvenir factory continues in Épinal, where bike fans will gather beautiful images. After a few kilometers on the towpath of the Canal des Vosges, let us head for Lake Bouzey for a swim! In the south, there will be less villages but more locks: the route becomes even wilder, taking you along the Coney, a small bucolic stream, before reaching the spa town of.

FROM CHARMES TO ÉPINAL

 **27 km** 



In the heart of the Moselle valley, the long distance cycling route goes along several small working-class towns in the Vosges such as Nomexy, surrounded by trees and fields, or Thaon-les-Bains. Then La Voie Bleue® stops in Épinal, punctuated by many cultural, gastronomic and heritage discoveries.



Coup de Coeur of La Voie Bleue THE CANAL DES VOSGES, A PERFECT SETTING FOR CYCLING WITH YOUR EYES IMMERSED IN THE BLUE!

The Canal des Vosges, formerly called the Canal de l'Est, consists of 93 locks and stretches out in a green setting, which covers 122 km, between pink sandstone cliffs and deep forests. On La Voie Bleue, this section of the canal allows you, without any effort, to pass through a very hilly region steeped in history.



DIVING IN FRENCH CLASSICS THE TOWN OF NOMEXY, THE REMAINS OF AN INDUSTRIAL SAGA



A relic of the industrial past of the Vosges, as well as some of the village streets of the department and other working-class towns such as Thaon-les-Bains, Nomexy recalls the golden age of the textile industry of the Vosges and "l'empire" Boussac in the 1960s. The old Nomexy spinning mill, made of red bricks, was built between 1870 and 1880 and, since 1922, became one of the most efficient mills of this sector in the Vosges. The bonus? The Moulin de Nomexy, whose first traces date back to 1263. Since then, the reputation of its flour, of exceptional quality, has crossed the borders.



Being blown away CHARMES, THE ULTIMATE NATURE SPOT

Charmes is aptly named: even in the town centre, it has real access to nature thanks to the Moselle and the canal running through it from north to south. On the waterfront, the shores of the town are dedicated to the practice of outdoor sports (fishing, kayaking and paddle in the summer) and to wildlife watching. The river, which is quite wild in this segment, welcomes many families of beavers!



GOURMET DELICACIES

LA TARTE AUX BRIMBELLES, THE OTHER NAME FOR BLUEBERRY PIE

In the Vosges, wild blueberries are called brimbelles. A linguistic distinctive feature from Old French that would mean **black ball**: **Bran** stands for black and **Beilles** defines the round shape. In season, you can taste these delicious pies in farm inns in the mountains, as well as to enjoy harvesting yourself a few berries, along La Voie Bleue!

FROM ÉPINAL TO CORRE

 **67 km** 



Place des Vosges, Musée de l'Image... In the heart of the Vosges, Épinal, the most wooded town in France, offers a cultural and historical break. La Voie Bleue®, joining the Canal des Vosges and the Saône, continues its path between the canal and the Coney stream, lined with ash trees. Then it heads for La-Vôge-les-Bains, with its unusual heritage, and Corre, where we enter Haute-Saône.

DIVING IN FRENCH CLASSICS PLACE DES VOSGES IN ÉPINAL, THE PLACE TO BE



Since the Middle Ages, bourgeois, bankers and traders have come here to settle their affairs. Classified as a historic monument, it is lined with Renaissance arcaded houses, such as Maison du Bailli, built in 1604 for a wealthy papermaker with a beautiful loggia. Place des Vosges is a busy living space as well as the unmissable meeting point for locals and visitors with its many café terraces.

GOURMET DELICACIES

LE BONBON DES VOSGES, A LEGENDARY SWEETNESS

Le bonbon des Vosges, the result of traditional expertise perpetuated by a few families of artisan confectioners, has been enjoyed by young and old alike since the post-war years. What is the recipe behind its success? Essential oils and natural aromas (fir buds, eucalyptus, blueberry, raspberry, violet, poppy, Mirabelle plum, bergamot...), and local raw materials (beet sugar and corn glucose syrup), all the ingredients are merged in a copper cauldron and then the dough is kneaded and transported to cylinders whose form is adapted to the shapes of candies!



Being blown away LAKE OF BOUZEY, THE BIGGEST LAKE IN THE VOSGES

Lake Bouzey is not only perfect for a swim in summer, lying on the beach and sailing quietly or observing birds, but it is also an unmissable place to find some cool air on the outskirts of Épinal. This reservoir was created in 1882 to supply the Canal des Vosges and became a small paradise for nature lovers: nearby, you can find the peat bog and the pond of Comtesse aux Forges, a protected natural area, which is the exotic home of many swans, mallards, coots and other species such as muskrat and grass snake.



CREATING MEMORIES Manufacture Royale, Bains-les-Bains: the history of tinplate

This tinware company, built in 1733 and located in the heart of the spa, is one of the best-preserved French industrial sites. A real **village-factory**, including production and storage premises, a hydraulic dam, a castle, workers' houses and a chapel: the whole complex, built on 20 hectares, transports the visitor out of time. The factory, transformed into a cultural place and lodge, has a park with three hundred year old trees, including a crooked beech on the UNESCO list!



ON THE SAÔNE banks

There is nothing like the Saône banks to dash off on the double to the Mâconnais in a rural atmosphere. From its source in the Vosges, the river goes through Haute-Saône, Côte-d'Or, Saône-et-Loire and offers an infinite variety of landscapes in the heart of Burgundy. While bucolic and wild on the Petite Saône, La Voie Bleue® rolls out a green carpet with southern charm on the Grande Saône.

FROM CORRE TO RAY-SUR-SAÔNE

 71 km 



Head for the Petite Saône. On this route taking you to villages of character and different agricultural landscapes, bike fans will play hide and seek with the river, following the loops of a wild Saône. Port-sur-Saône is a refreshing river stop immersed in nature.



CREATING MEMORIES *Jussey, a village with a view*

Cité de Caractère of Burgundy-Franche-Comté, Jussey is the birthplace of Marianne but also the country of fountains and washhouses: around twenty of them characterize the village, lining the streets and decorating the squares. From Jussey, the descent is impressive but the view over the surrounding hills is panoramic!



GOURMET DELICACIES **GRIOTTINE DE FOUGEROLLES, CHERRY SEASON!**

An unmissable speciality from Haute-Saône: the griottine de Fougerolles is a wild cherry, Oblachinska, a variety from the Balkans, macerated in several liqueurs and Kirsch. This Morello cherry, whose recipe is jealously guarded by local distilleries, is praised all over the world and can be enjoyed as an aperitif, as an after dinner liqueur or in certain blends.



Coup de Coeur of La Voie Bleue **PORT-SUR-SAÔNE, A GREEN TOWN ON THE CANAL BANKS**

In this small town of character, the blue of the water never ceases to blend with the green of the forests and the surrounding countryside. Located on the Saône banks and the lateral canal, Port-sur-Saône is worth going out your way to see it: besides its bell tower built in the typical style of the France Comté region, it also hosts the animal park of La Maladière. Located in a forest with several species of trees with rare species, this park, covering 7 hectares, is home to several families of deer in their natural environment.



ACCOMODATION **AT GAËLLE METRIS', A RIVER FLOWS THROUGH IT!**

This restored 18th century farmhouse, located 13 km from the village of Jussey and a stone's throw from the marina, and is nestled between the Coney river and the Canal des Vosges, covering more than 14 hectares. Sheep, cows and poultry: this guesthouse is a real paradise for countryside lovers as well as fishing and nature enthusiasts.

FROM RAY-SUR-SAÔNE TO SAINT-JEAN-DE-LOSNE

115 km



On this axis of the Petite Saône, La Voie Bleue® flows into the heart of Burgundy. The bed of the river widens slightly, the villages come one after with each pedal stroke, features of the trading activity of the river until the mid-19th century.

DIVING IN FRENCH CLASSICS CHÂTEAU DE RAY-SUR-SAÔNE, THE LARGEST MEDIEVAL FORTRESS IN FRANCHE-COMTÉ!



Château de Ray-sur-Saône is nestled in a picturesque setting, overlooking the Saône valley. Its two 14th century Roman towers, relics of a past of blood and fire, still watch over the village. A visit fifty meters above is essential to look back in time! Up there, an open-air history book and a magnificent 6-hectare English-style park, planted with rare plants, await visitors.

Coup de Cœur of La Voie Bleue FIFTY SHADES OF GRAY!

Gray, awarded with the "cité de caractère" label, has been for a long time one of the most important towns in Haute-Saône. Its trade vocation led it once to become the second port in the East after Strasbourg. Its architectural (the basilica, built between 1481 and 1530 in a Gothic style, or the town hall, a remarkable building that dates back to 1568) and cultural heritage (Museum of Art and Archeology Baron-Martin, Museum of Natural History...) make it a favourite destination.

The highlight: The Saône and its broad stone quays with their beautiful bourgeois residences.



Being blown away PONTAILLER-SUR-SAÔNE, AN ISLAND IN THE HEART OF THE SAÔNE!

The history of this charming marina is related to that of the Saône and to the many small rivers - the Albane, the Bèze, the Vingeanne and the Ognon - flowing into the river. Since the Middle Ages, the heart of the village has developed itself on a loop in the shape of a peninsula between the watercourses of the Saône and the Vieille Saône. Awarded with the "Green Station" label, it is an essential destination for nature and swimming enthusiasts!



CREATING MEMORIES Saint-Jean-de-Losne, the leading river port for tourism in France!

At the crossroads of all the largest waterways in France, Saint-Jean-de-Losne is ideally located at the junction of the canals of Burgundy, Rhone and Rhine! Homeport or simple port of call, the village offers the opportunity to discover interesting monuments such as the Town Hall, a beautiful 18th century building with a collection of wallpaper, which dates back earlier than the Revolution, or even Saint-Jean-Baptiste church with its 18th century furniture and its organ.



DIVING IN FRENCH CLASSICS SEURRE, A PICTURESQUE TOWN ALONG THE SAÔNE



Whether via the sumptuous apothecary of the Hôtel-Dieu or the Parcours Jacquemart, a circuit of discovery of the heritage and remarkable places of Seurre, this small town has a lot to offer. The must? L'étang Rouge, the Red Pond, an authentic small Burgundy village reconstituted from dismantled and restored old houses and farms, representative of the typical rural buildings of the Val de Saône. Some of the houses are surrounded by a garden, which host vegetables, ancient grape varieties, medicinal plants and forgotten fruits.



Coup de Cœur of La Voie Bleue A CANOE-KAYAK TRIP ON THE SAÔNE

For a calm water ride in a still wild area, head to the Seurre beach campsite, nestled in a green bower. Whether you are an expert or beginner in the handling of paddles, you can rent kayaks and canoes. The ride is ideal for rowing in a bucolic setting and in complete safety on the Saône and allows you to discover, at a relaxed pace, the local ornithological fauna. The must? You can disembark any time for a picnic or a snack break!

FROM SAINT-JEAN-LOSNE TO CHALON-SUR-SAÔNE

72 km



Let us go to southern Burgundy, the point of confluence of the Doubs and the Saône. La Voie Bleue® continues its route along the picturesque banks of the Grande Saône, which can reach up to 300 m in width.

CREATING MEMORIES Chalon-sur-Saône, between the river and the canals

Chalon-sur-Saône, a town of art and history, delights gourmets, oenophiles as well as lovers of art and historical curiosities. The town, crossed by the Saône, with its attractive and joyful air, is the world cradle of photography. There is everything to satisfy your curiosity: animated pedestrian streets, barges sailing quietly, the Saint-Vincent cathedral and its eponymous square with half-timbered houses, the Museum Nicéphore Niepce...



GOURMET DELICACIES LA PÔCHOUSE,

THE BOUILLABAISSE OF BURGUNDY

La pôchouse, a river fish stew sautéed in white wine, is to Burgundy what bouillabaisse is to Marseille: an institution. Boatmen and anglers from the Doubs and Saône originally prepared this poor man's dish, which dates back to the 16th century. Its composition varies according to the fishing: carp, tench, trout, perch, pike...

ACCOMMODATION

LA DEMEURE DE L'ÎLE ROLLET, A HAVEN OF PEACE ON THE WATERFRONT!

La Demeure de l'île Rollet, a guest house located in Saint-Jean-de-Losne in Burgundy, is a little corner of paradise set in a park extending over 3300 m on the Saône banks: an ideal step for a chlorophyll break! It accommodates four beautiful rooms with refined decoration and different atmospheres, including two suites for 4 and 5 people.

FROM CHALON-SUR-SAÔNE TO MÂCON

 **70 km** 



Here, kilometres flow following the rhythm of villages with a typical small heritage, vineyards and large tables but also Roman heritage and nautical activities. Diving in the Mâconnais grants a unique encounter with nature.



CREATING MEMORIES

Tournus, a city steeped in history

Tournus, nestled in the heart of an amphitheatre of green hills and bathed by the Saône, echoes the southern style with its narrow streets, small slopes and round tiled roofs. Saint-Philibert Abbey, a masterpiece of Roman art, the Hôtel-Dieu and its magnificent apothecary, the unusual bicycle museum but also old stalls, private mansions and interior courtyards are all gems and curiosities adorning this old town founded under the Roman Empire.



GOURMET DELICACIES

THE MÂCONNAIS VINEYARDS, THE KINGDOM OF CHARDONNAY!

South-west of Tournus, the Mâconnais vineyards offer a series of forested peaks and small valleys, ideal for vine growing. While looking south, the hills give way to a magnificent landscape, dominated by monumental cliffs. A pale gold colour and divine aromas characterize the ubiquitous Chardonnay, which owes its name to the eponymous village.



Being blown away SOLUTRÉ-POUILLY-VERGISSON, A MAJOR ARCHAEOLOGICAL SITE



Emblematic in Burgundy, Solutré-Pouilly Vergisson, classified as Grand Site de France, is an emblematic and a major archaeological site in Burgundy that has been frequented by humankind for more than 57,000 years! The famous Roche de Solutré, a real rocky outcrop in the middle of a vineyard of crus, overlooks this landscape: it represents a unique soil, of which la Maison du Grand Site, a full-fledged interpretation centre, offers a complete reading with workshops, animations and exhibitions.



DIVING IN FRENCH CLASSICS MÂCON, THE BIRTHPLACE OF ALPHONSE DE LAMARTINE

Mâcon, crossed by the Saône, charms you with its southern character, with its brightly coloured facades and round tiled roofs. With an elegant historic centre with its coloured lanes, the town is worth a visit to discover its charming Place aux Herbes and the famous Renaissance wooden house, the Museum des Ursulines or Saint-Laurent Bridge and its panoramic view of the docks. **The must?** Discover the city in the footsteps of Lamartine via a marked circuit.

TOWARDS THE RHÔNE AND LYON The Saône valley and the Beaujolais



For the final section of this cycling trip, La Voie Bleue® invites you to explore the heart of the Saône valley between the great landscapes of the Ain and the wine-growing hills of Beaujolais. They are punctuated with gourmet and cultural destination such as Trévoux, the capital of the princes of Dombes and the Saône banks lined with open-air cafés allow you to ride quietly in a countryside with a shifting landscape. This melting pot of nature leads naturally to the Rhône and Lyon, la cité de Gones, to get at the confluence of the Saône and the Rhône, the final stop of La Voie Bleue®.

FROM MÂCON TO LYON

80 km



From Mâcon, head for Thoissey for a stopover with a southern atmosphere! The journey on La Voie Bleue® continues on the Saône left bank with beautiful views of the Mâconnais and Beaujolais. From Thoissey to Trévoux, there are plenty of opportunities for a visit: now is the time to go for a kayak trip or to have a drink in a tavern on the Saône banks. You will find similar little pleasures between Trévoux and Lyon, where we arrive via the Île Barbe. In the heart of the city, La Voie Bleue® runs along the Renaissance facades bordering the Saône. Highlight of the trip: the confluence with the Rhône accompanies the passage through the eponymous district marked by architectural and cultural innovation.



Being blown away THE BEAUJOLAIS, A STROLL THROUGH THE UNESCO GLOBAL GEOPARK

Belleville-en-Beaujolais, located on the edge of the Saône, is a perfect stopover for exploring the Beaujolais and its crus, the first vineyard in the world recognized by UNESCO as a Global Geopark. Moulin à vent, Chiroubles, Régnié, Chenas, Saint Amour, Fleurie, Morgon, Brouilly ...: a completely secure breakaway covering 15 km, which allows you to get an overview from the heights of the majestic Mont Brouilly or to have a stroll in an exceptional geological area.



ACCOMODATION KANÔPÉE VILLAGE AT TRÉVOUX, ENJOYING A HILLTOP CHALET

Built on stilts, the Kanopée Village chalets climb two meters above the ground onto a vast terrace made of Douglas fir in the Beaujolais. Between heaven and earth, this unusual accommodation is a campsite located in an aquatic and wild setting, a veritable balcony on the Saône: the unmissable place to be lulled by a flight of herons, a sunset and small boats.



CREATING MEMORIES *La Maison Éclusière in Parcieux, a holiday atmosphere*

Restored in 2012 to revive the river heritage of the Saone banks, la Maison éclusière in Parcieux, built in 1870, formerly used to house the lock keepers in charge of operating the needle weir. Ideal for recharging your batteries and finding a cool breeze near the marina, it offers a playful circuit of interpretation, an exhibition area but also a rich and diverse cultural program.



GOURMET DELICACIES THE TAVERNS OF ROCHETAILLÉE-SUR- SAÔNE, THE FROG PARTY!

Located 10 km from Lyon, Rochetaillée-sur-Saône is the meeting point of frog lovers! Praised for its open-air café promenade, this village full of character offers a relaxing towpath as well as several terraces along the banks, where you can refresh yourself or taste specialties such as frog legs with parsley or fried fish.



DIVING IN FRENCH CLASSICS LYON, IN THE HEART OF 2 000 YEARS OF HISTORY!

La Voie Bleue® crosses four neighbourhoods of Lyon with a unique atmosphere: nearly 500 hectares, classified as Unesco World Heritage site, include the Vieux-Lyon districts, the Fourvière hill, the slopes of Croix-Rousse and a large part of the Presqu'île. You will be able to admire the Renaissance facades and the secret passages called **Traboules**, which, in medieval times, helped people to reach quickly the boats on the Saône, and then, at the beginning in the mid-20th century, were crossed by the silk weavers to transport cloth rolls: Lyon offers 2000 years of history!



Coup de Coeur of La Voie Bleue A KAYAK TRIP IN THE HEART OF LYON

To discover the city of Lyon from a new angle, Lyon canoe offers well-planned courses or free rentals of kayak or paddle on the Saône. On the outskirts, leisure centers and aquatic clubs also schedule outings on demand for a gentle escape on the water.





<https://en.lavoiebleue.com/>



Contact Presse

**AGENCE RÉGIONALE DU TOURISME
GRAND EST**

Didier Rochat
Attaché de presse
Tél : +33 (0)3 83 80 01 82
didier.rochat@art-grandest.fr

BOURGOGNE-FRANCHE-COMTÉ TOURISME

Véronique BEIGENGER
Attachée de presse internationale / Senior Press Officer
Service Relations Publiques
Tél +33 (0)6 87 06 82 72 - +33 (0)3 80 280 298
v.beigenger@bfctourisme.com

**AGENCE REGIONALE DU TOURISME
AUVERGNE-RHONE-ALPES**

Vanessa MICHY
Attaché de presse / Senior Press Officer
Tél : +33 (0)4 73 29 49 33 - Mob : +33 (0)6 61 27 27 48
v.michy@auvergnerhonealpes-tourisme.com



Rédaction : Fluxus Communication



Graphisme et illustration : D. Herbreteau



Credits photos : Clo&Clem2021, G.Robert-Famy, T. Fournier, E. Ramousse, A. Ibanez, A. Doire, Cardot, D. Mas-Jouin, S. Thévenin, Moselle Attractivité, P. Defontaine, C. Vasselet, G. Reboisson / Adobestock, OT Communautaire Rodemack-Cattenom, Séquence K, Centre Pompidou-Metz © Shigeru Ban Architects Europe et Jean de Gastines Architectes, avec Philip Gumuchdjian pour la conception du projet lauréat du concours / Metz Métropole / Centre Pompidou-Metz / Photographie : Philippe Gisselbrecht



AVEC LE SOUTIEN DE L'UNION EUROPÉENNE

